

The background of the slide is a light-colored, marbled paper with a complex, organic pattern of grey and white veins. A white rectangular frame is centered on the page, containing the main text. On the left side of this frame, there is a vertical white bar.

# **DFSP NORWALK PIPELINE RELEASES**

# NEW DISCOVERY

- April 15, 1999
- North of Truck Fill Stands, between Water Tank and FSII Tank
- 2 - 6 inch product pipelines
- Weathered JP-5?
- JP-5?
- Gravity flow
- Not indicated on facility drawings

# EMERGENCY ACTION

- Soil excavated
- Pipelines cut back
- Both pipelines drained of product via vacuum truck
- Pipelines secured w/caps (welded)
- Federal and State notifications

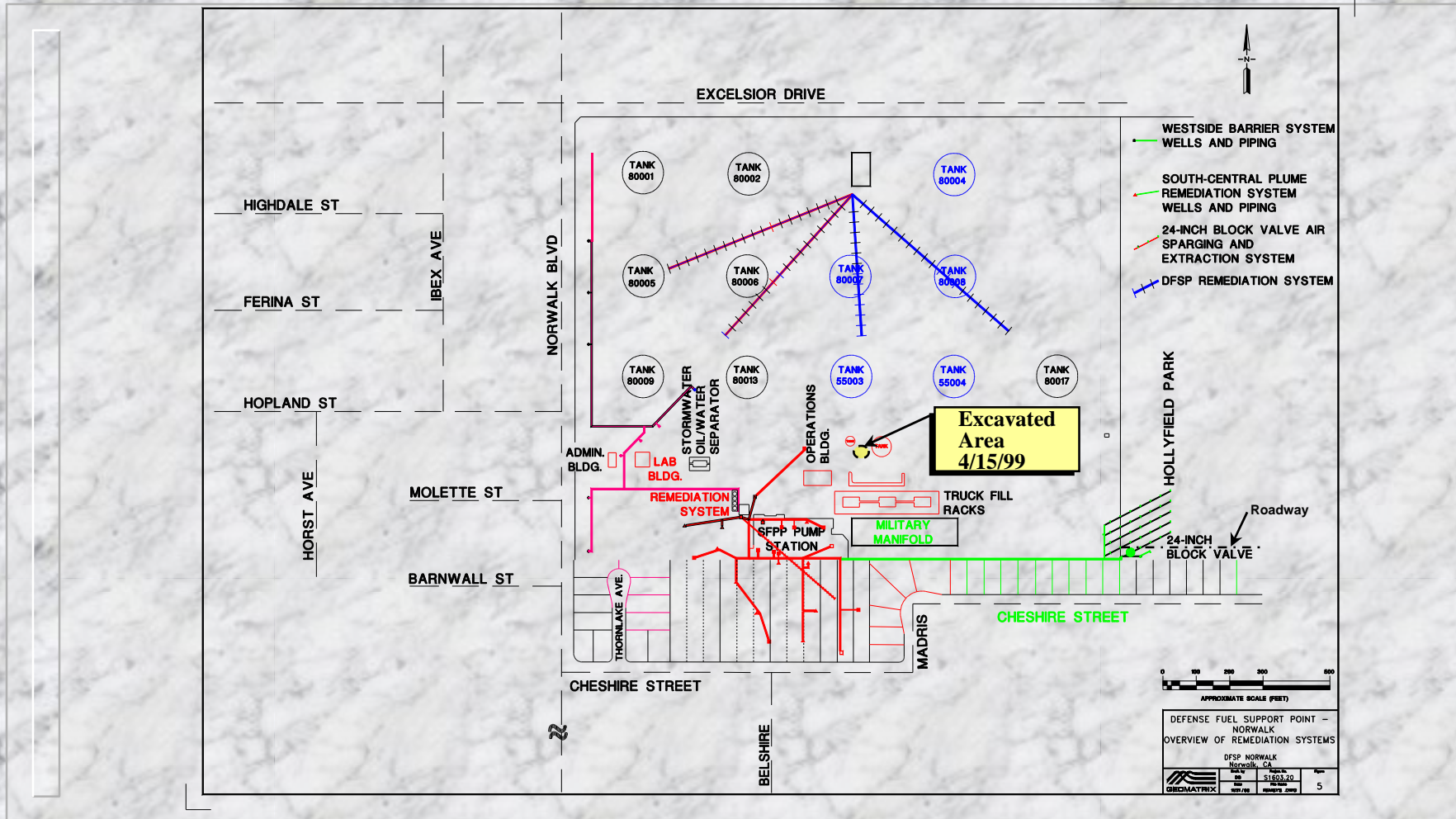
# IMMEDIATE ACTION

- Sample/test soil
- Remove and dispose soil (haul away)
- Line area w/plastic sheathing
- Backfill w/clean soil
- Compact to 90% density
- Install 4 inch aggregate top layer

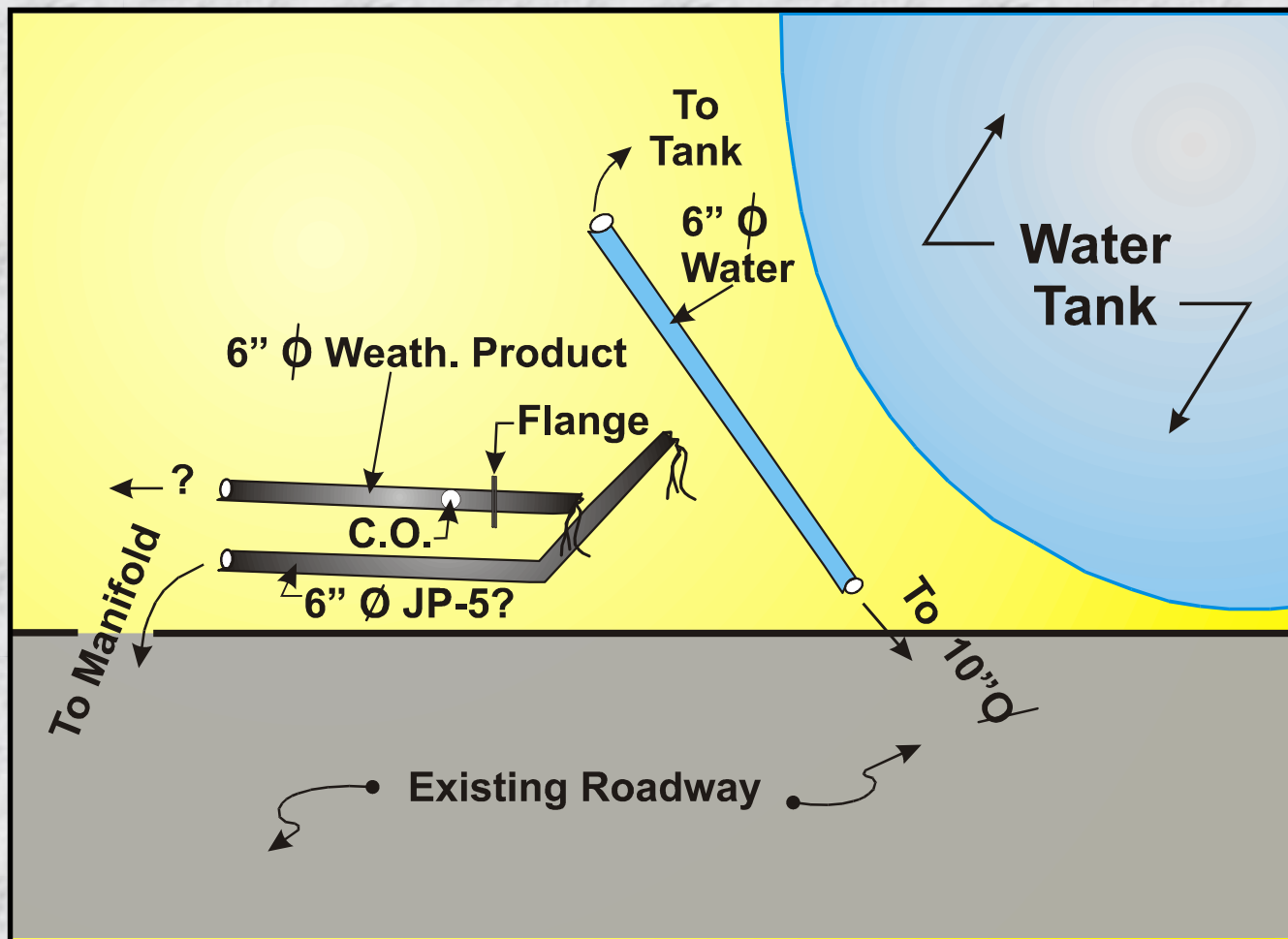
# FUTURE ACTION

- Develop workplan for remediation
- Remediate area

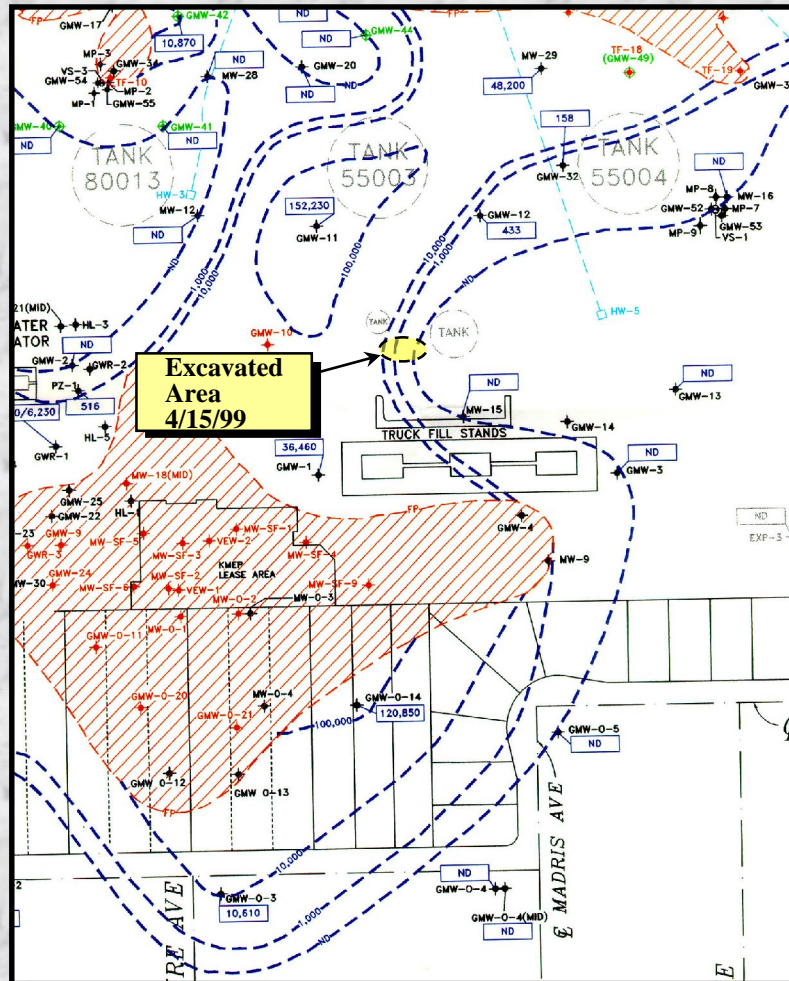
# Map of Current Remediation Systems



# Excavated Area Diagram



# Map of Site and Excavated Area





# CENTRAL PLUME REMEDIATION SYSTEM UPDATE

- Total Hydrocarbons Recovered to Date:  
97,529 Gallons
- Liquid-Phase Hydrocarbons Recovered:  
50,509 Gallons
- Vapor-Phase Hydrocarbons Removed:  
47,020 Gallons
- Dissolved-Phase Hydrocarbons Removed:  
540 Gallons

# DESC Hydrocarbon Recovery

HYDROCARBONS & FREE PRODUCT - CENTRAL PLUME

